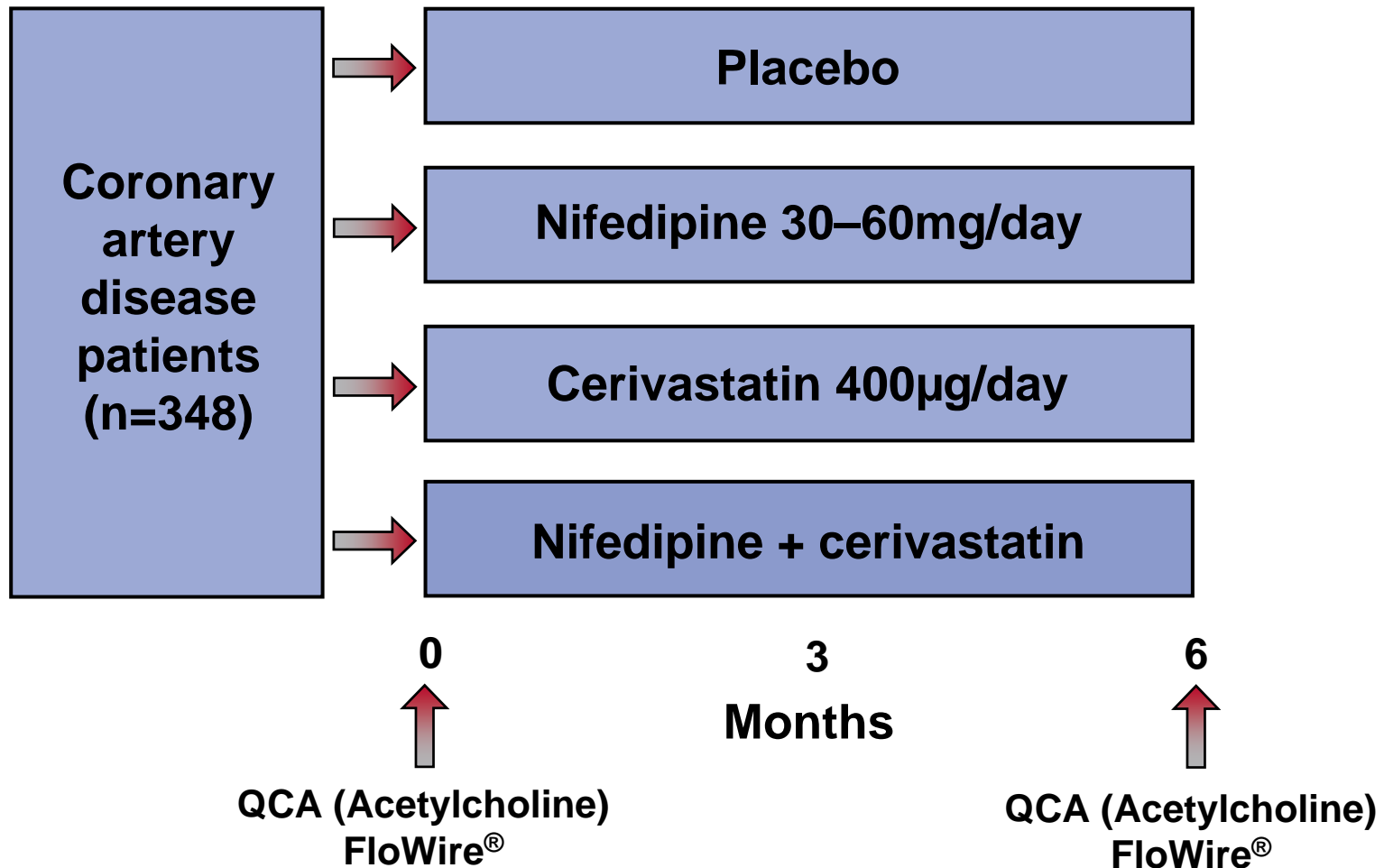


# **ENCORE**

## **Evaluation of Nifedipine and Cerivastatin on Recovery of Endothelial Function**

# Study design



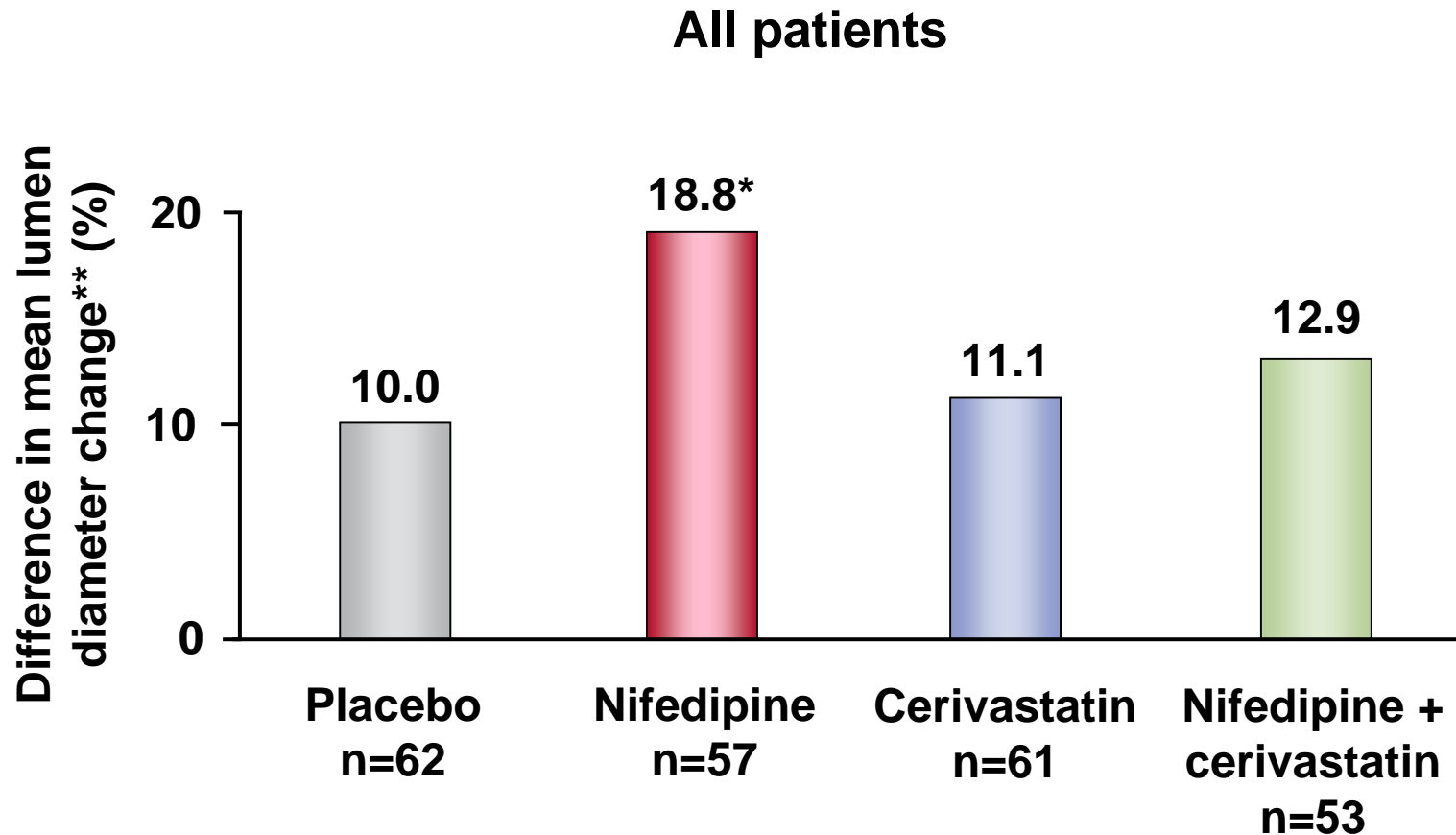
## Patient population

Patients	Placebo	Nifedipine	Cerivastatin	Nifedipine + cerivastatin
<b>Evaluable</b>	<b>62</b>	<b>57</b>	<b>61</b>	<b>53</b>
<b>Sex (M/F)</b>	<b>59/3</b>	<b>47/10</b>	<b>49/12</b>	<b>45/8</b>
<b>Age ± SD (years)</b>	<b>55.9 (10.8)</b>	<b>58.3 (11.0)</b>	<b>57.5 (9.0)</b>	<b>59.1 (9.8)</b>
<b>Weight ± SD (kg)</b>	<b>78.1 (9.9)</b>	<b>79.7 (12.2)</b>	<b>81.0 (15.4)</b>	<b>79.7 (12.7)</b>
<b>LDL-C ± SD (mg/dL)</b>	<b>132 (34)</b>	<b>135 (30)</b>	<b>134 (33)</b>	<b>135 (34)</b>
<b>SBP ± SD (mmHg)</b>	<b>128 (18)</b>	<b>133 (17)</b>	<b>132 (21)</b>	<b>131 (20)</b>
<b>DBP ± SD (mmHg)</b>	<b>76 (9)</b>	<b>76 (11)</b>	<b>77 (10)</b>	<b>76 (9)</b>

DBP: diastolic blood pressure, LDL-C: low-density lipoprotein-cholesterol, SBP: systolic blood pressure

ENCORE Investigators.  
Circulation 2003

# Nifedipine improves coronary endothelial function (1)



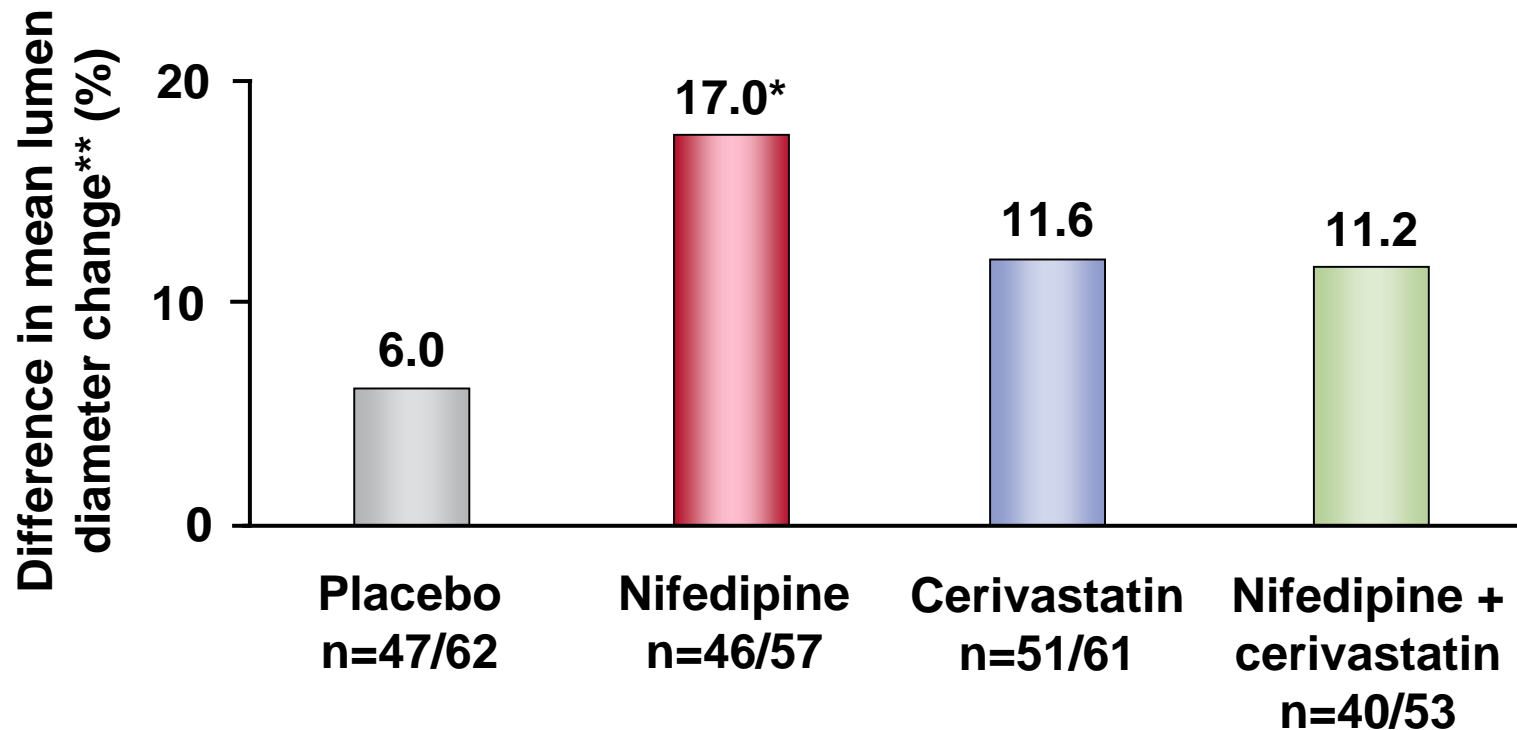
\*p=0.04 vs placebo

\*\*Measured at the highest comparable dose of acetylcholine

ENCORE Investigators.  
Circulation 2003

# Nifedipine improves coronary endothelial function (2)

Patients not treated with ACE inhibitor or angiotensin II receptor blocker



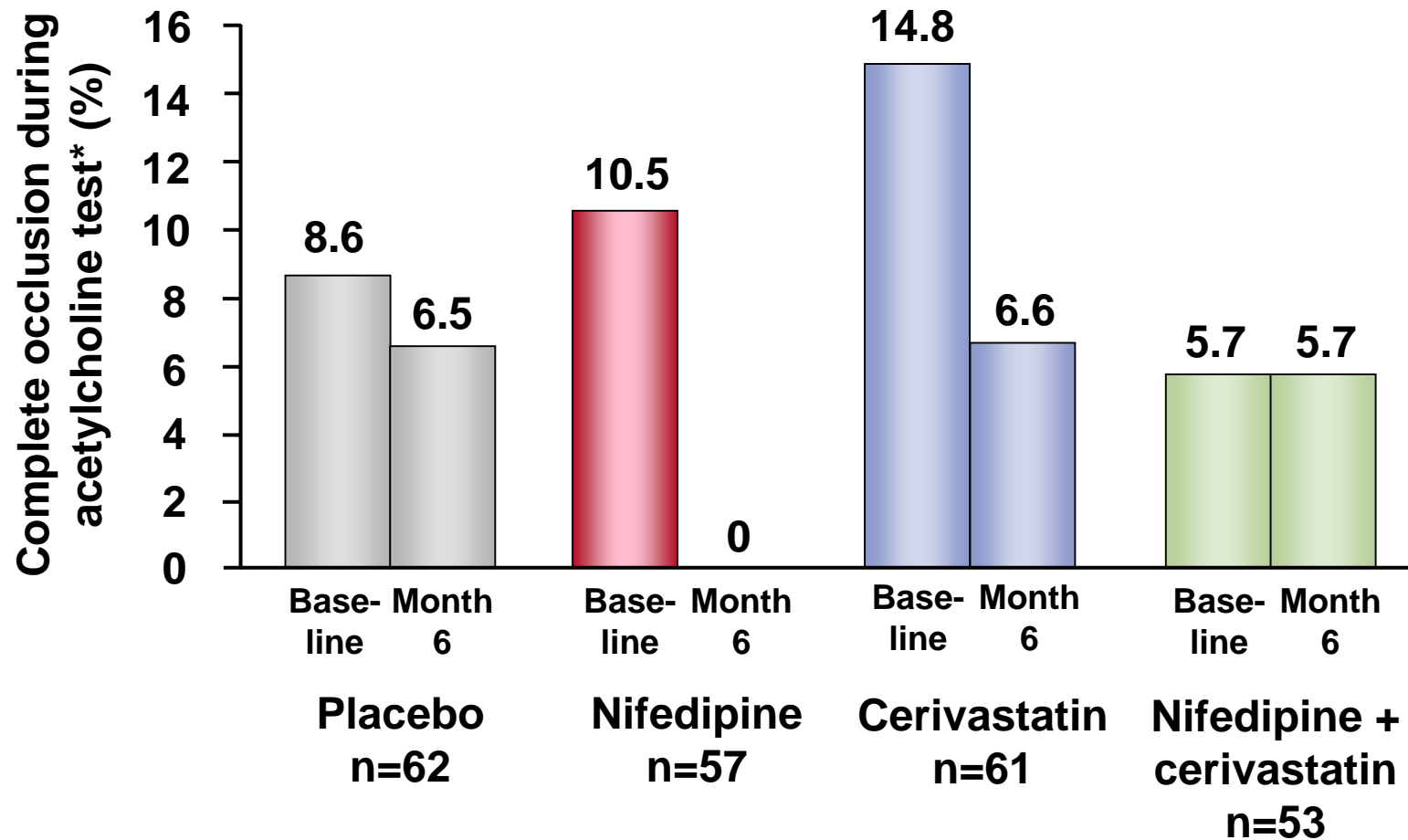
\*p=0.02 vs placebo

\*\*Measured at the highest comparable dose of acetylcholine

ACE: angiotensin-converting enzyme

ENCORE Investigators.  
Circulation 2003

# Nifedipine markedly reduces incidence of complete coronary occlusion

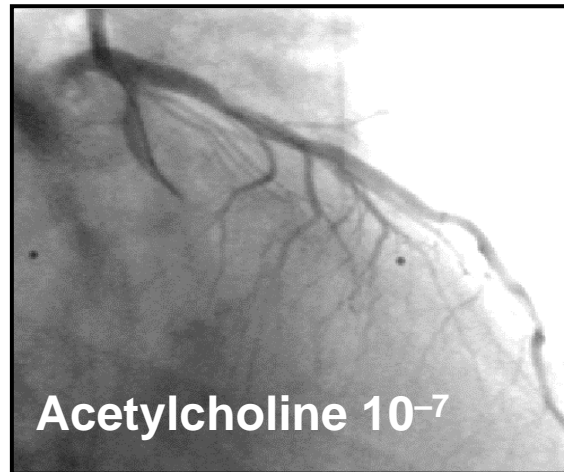


\*Occlusion to <0.2mm

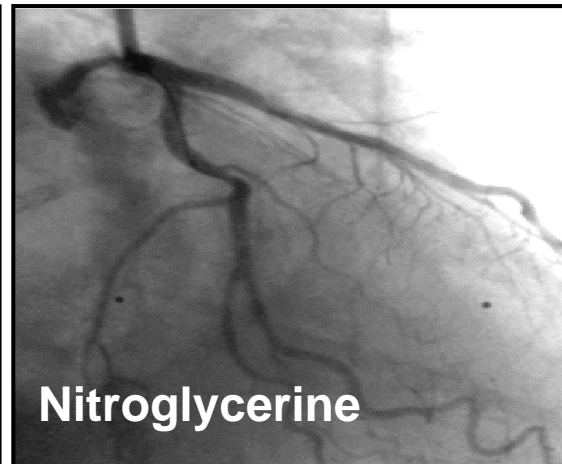
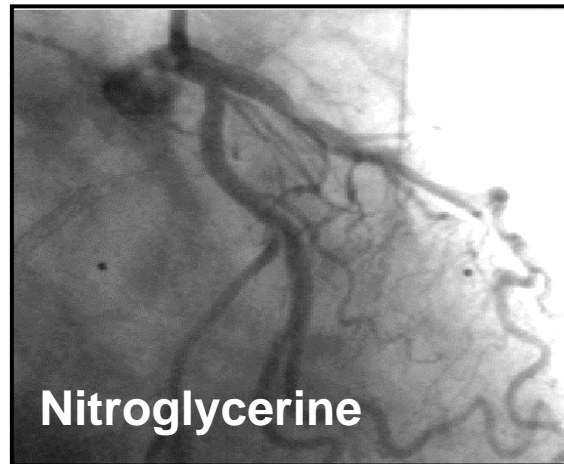
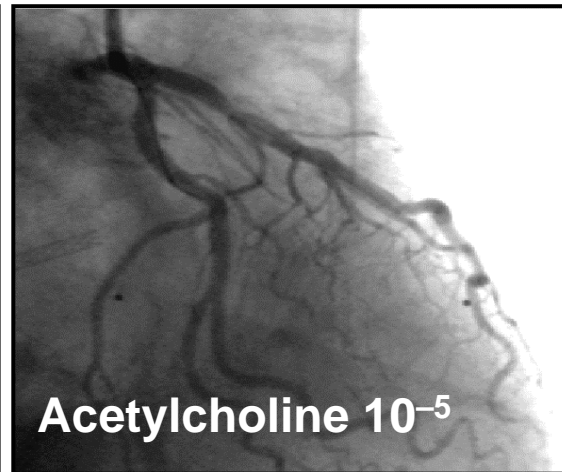
Bayer AG data on file 2003

# Effect of nifedipine on the acetylcholine test

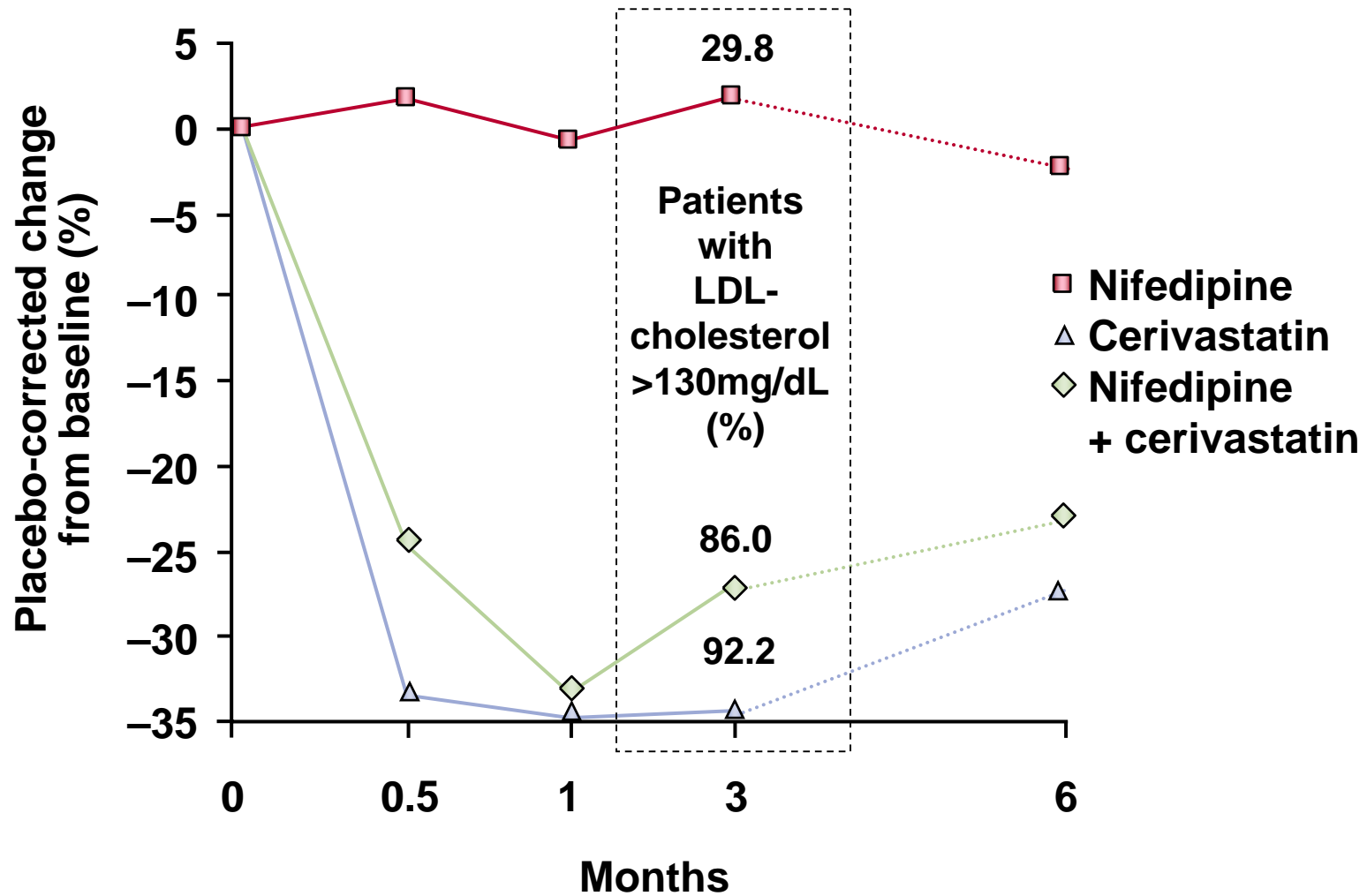
Baseline



After 6 months of  
nifedipine treatment



# Nifedipine treatment alone does not affect LDL-cholesterol



LDL: low-density lipoprotein

ENCORE Investigators. Circulation 2003

# Conclusions

- **Treatment with nifedipine significantly improved endothelial function in the most constricting coronary artery segment**
- **Provides evidence for the vascular protective effects demonstrated by INSIGHT**